



GREENFIT
Pipe and fittings

ABOUT US

Greenfit was founded in 2012, since then has been producing the most advanced plastic pipe and fitting systems made of PVC and PP-R. Our Headquarters and Manufacturing Facilities are based in Ergene, Tekirdağ, Turkey. With our experienced management team and diverse workforce who are dedicated to innovation, quality and customer satisfaction, Our focus is to provide premium quality of piping and fitting solutions to our Worldwide Customers.

Greenfit Products are now available in retail outlets, hypermarkets, supermarkets, hardware and speciality stores, and wholesalers in Algeria, Libya , Morocco , Egypt, Lebanon , Syria , Iraq , Saudi Arabia , Bulgaria , Romania , Republic of Moldova , Azerbaijan , Georgia , Kyrgyzstan ,Tajikistan and Uzbekistan, also we have got our products Registered and Certified in Russian Federation, Ukraine, Belarus and Kazakhstan . Since procreate the highest quality product and service was a prime concern of Greenfit, We have been confirmed by ISO 9001: 2015 Certification.

Greenfit Products are made of raw materials produced by renowned World Manufacturers that follow all international quality norms and requirements. Greenfit PP-R Products are made of 99% high quality polypropylene and 1% of non-toxic additive mix which contains no harmful chemicals. The most important they are 100% recyclable and It takes less energy to produce and run. PP-R systems when compared to traditional piping systems and longevity . They are designed to last 3-4 times longer and resulting in less possible waste. Our Quality Control Team ensures that all products manufactured are stringent to International Quality Standards.









RUSSIA

CHINA

AUSTRALIA

KAZAKHSTAN

MONGOLIA

INDIA

SAUDI ARABIA

SWEDEN

FINLAND

NORWAY

GERMANY

POLAND

CZECH REPUBLIC

HUNGARY

ITALY

FRANCE

NETHERLANDS

SPAIN

PORTUGAL

GREECE

TURKEY

ARMENIA

GEORGIA

UKRAINE

OSSETIA

ABKHAZIA

OSSETIA

ABKHAZIA

OSSETIA

ABKHAZIA

OSSETIA

ABKHAZIA

OSSETIA

ABKHAZIA

OSSETIA

ABKHAZIA

OSSETIA

ABKHAZIA

OSSETIA

ABKHAZIA

OSSETIA

ABKHAZIA

OSSETIA

ABKHAZIA

OSSETIA

ABKHAZIA

OSSETIA

ABKHAZIA

OSSETIA

ABKHAZIA

OSSETIA

ABKHAZIA

LIBYA

EGYPT

CHAD

SUDAN

ETHIOPIA

ANGOLA

NAMIBIA

SOUTH AFRICA

LIBYA

EGYPT

CHAD

SUDAN

ETHIOPIA

ANGOLA

NAMIBIA

SOUTH AFRICA

LIBYA

EGYPT

CHAD

SUDAN

ETHIOPIA

ANGOLA

NAMIBIA

SOUTH AFRICA

LIBYA

EGYPT

CHAD

SUDAN

ETHIOPIA

ANGOLA

NAMIBIA

SOUTH AFRICA

LIBYA

EGYPT

CHAD

SUDAN

ETHIOPIA

ANGOLA

NAMIBIA

SOUTH AFRICA

LIBYA

EGYPT

CHAD

SUDAN

ETHIOPIA

ANGOLA

NAMIBIA

SOUTH AFRICA

LIBYA

EGYPT

CHAD

SUDAN

ETHIOPIA

ANGOLA

NAMIBIA

SOUTH AFRICA

LIBYA

EGYPT

CHAD

SUDAN

ETHIOPIA

ANGOLA

NAMIBIA

SOUTH AFRICA

LIBYA

EGYPT

CHAD

SUDAN

ETHIOPIA

ANGOLA

NAMIBIA

SOUTH AFRICA

LIBYA

EGYPT

CHAD

SUDAN

ETHIOPIA

ANGOLA

NAMIBIA

SOUTH AFRICA

LIBYA

EGYPT

CHAD

SUDAN

ETHIOPIA

ANGOLA

NAMIBIA

SOUTH AFRICA

LIBYA

EGYPT

CHAD

SUDAN

ETHIOPIA

ANGOLA

NAMIBIA

SOUTH AFRICA

LIBYA

EGYPT

CHAD

SUDAN

ETHIOPIA

ANGOLA

NAMIBIA

SOUTH AFRICA

LIBYA

EGYPT

CHAD

SUDAN

ETHIOPIA

ANGOLA

NAMIBIA

SOUTH AFRICA

LIBYA

EGYPT

CHAD

SUDAN

ETHIOPIA

ANGOLA

NAMIBIA

SOUTH AFRICA

LIBYA

EGYPT

CHAD

SUDAN

ETHIOPIA

ANGOLA

NAMIBIA

SOUTH AFRICA

LIBYA

EGYPT

CHAD

SUDAN

ETHIOPIA

ANGOLA

NAMIBIA

SOUTH AFRICA

LIBYA

EGYPT

CHAD

SUDAN

ETHIOPIA

ANGOLA

NAMIBIA

SOUTH AFRICA

LIBYA

EGYPT

CHAD

SUDAN

ETHIOPIA

ANGOLA

NAMIBIA

SOUTH AFRICA

LIBYA

EGYPT

CHAD

SUDAN

ETHIOPIA

ANGOLA

NAMIBIA

SOUTH AFRICA

LIBYA

EGYPT

CHAD

SUDAN

ETHIOPIA

ANGOLA

NAMIBIA

SOUTH AFRICA

LIBYA

EGYPT

CHAD

SUDAN

ETHIOPIA

ANGOLA

NAMIBIA

SOUTH AFRICA

LIBYA

EGYPT

CHAD

SUDAN

ETHIOPIA

ANGOLA

NAMIBIA

SOUTH AFRICA

LIBYA

EGYPT

CHAD

SUDAN

ETHIOPIA

ANGOLA

NAMIBIA

SOUTH AFRICA

LIBYA

EGYPT

CHAD

SUDAN

ETHIOPIA

ANGOLA

NAMIBIA

SOUTH AFRICA

LIBYA

EGYPT

CHAD

SUDAN

ETHIOPIA

ANGOLA

NAMIBIA

SOUTH AFRICA

LIBYA

EGYPT

CHAD

SUDAN

ETHIOPIA

ANGOLA

NAMIBIA

SOUTH AFRICA

LIBYA

EGYPT

CHAD

SUDAN

ETHIOPIA

ANGOLA

NAMIBIA

SOUTH AFRICA

LIBYA

EGYPT

CHAD

SUDAN

ETHIOPIA

ANGOLA

NAMIBIA

SOUTH AFRICA

LIBYA

EGYPT

CHAD

SUDAN

ETHIOPIA

ANGOLA

NAMIBIA

SOUTH AFRICA

LIBYA

EGYPT

CHAD

SUDAN

ETHIOPIA

ANGOLA

NAMIBIA

SOUTH AFRICA

LIBYA

EGYPT

CHAD

SUDAN

ETHIOPIA

ANGOLA

NAMIBIA

SOUTH AFRICA

LIBYA

EGYPT

CHAD

SUDAN

ETHIOPIA

ANGOLA

NAMIBIA

SOUTH AFRICA

LIBYA

EGYPT

CHAD

SUDAN

ETHIOPIA

Linear Expansion Table for PP-R Pipe

Pipe Length	Temperature Difference DT (°C)							
L(m)	10	20	30	40	50	60	70	80
1.0	1.50	3.00	4.50	6.00	7.50	9.00	10.50	12.00
2.0	3.00	6.00	9.00	12.00	15.00	18.00	21.00	24.00
3.0	4.50	9.00	13.50	18.00	22.50	27.00	31.50	36.00
4.0	6.00	12.00	18.00	24.00	30.00	36.00	42.00	48.00
5.0	7.00	15.00	22.50	30.00	37.50	45.00	52.50	60.00
6.0	9.00	18.00	27.00	36.00	45.00	54.00	63.00	72.00
7.0	10.50	21.00	31.50	42.00	52.50	63.00	73.50	84.00
8.0	12.00	24.00	36.00	48.00	60.00	72.00	84.00	96.00
9.0	13.50	27.00	40.50	54.00	67.50	81.00	94.50	108.00
10.0	15.00	30.00	45.00	60.00	75.00	90.00	105.00	120.00

Linear Expansion Table For PP-R Aluminium Foiled Pipe

Pipe Length	Temperature Difference DT (°C)							
L(m)	10	20	30	40	50	60	70	80
1.0	0.30	0.60	0.90	1.20	1.50	1.80	2.10	2.40
2.0	0.60	1.20	1.80	2.40	3.00	3.60	4.20	4.80
3.0	0.90	1.80	2.70	3.60	4.50	5.40	6.30	7.20
4.0	1.20	2.40	3.60	4.80	6.00	7.20	8.40	9.60
5.0	1.50	3.00	4.50	6.00	7.50	9.00	10.50	12.00
6.0	1.80	3.60	5.40	7.20	9.00	10.80	12.60	14.40
7.0	2.10	4.20	6.30	8.40	10.50	12.60	14.70	16.80
8.0	2.40	4.80	7.20	9.60	12.00	14.40	16.80	19.20
9.0	2.70	5.40	8.10	10.80	13.50	16.20	18.90	21.60
10.0	3.00	6.00	9.00	12.00	15.00	18.00	21.00	24.00

PP-R Pipe Technical Data

Characteristics		Unit	Test Method	Value
Density	+23 °C	g/cm3	ISO 1183	0,909
Melting Index	MFR 190/5	g/10 min	ISO 1133	0,55
	MFR 230/2,16	g/10 min	ISO 1133	0,30
	MFR 230/5	g/10 min	ISO 1133	1,20
Volume Flow Index	MVR 230/2,16	cm3/10 min	ISO 1133	0,4
Break-off Strength	(50 mm/min)	MPa	ISO 527/1+2	25
Break-off Strain	(50 mm/min)	%	ISO 527/1+2	10
Shore D Toughness	(3 sec value)		DIN 53505	65
Charpy Blow (Strength)	+23 °C	kJ/m2	ISO 179/1eU	43
	0 °C	kJ/m2	ISO 179/1eU	
	-30 °C	kJ/m2	ISO 179/1eU	
Charpy Milled Blow Strength	+23 °C	kJ/m2	ISO 179/1eA	52
	0 °C	kJ/m2	ISO 179/1eA	7
	-30 °C	kJ/m2	ISO 179/1eA	2,5
Melting Range		°C	DSC	150-160
Linear Thermo Expansion Coefficient		1/K	DIN 53752	1,5*10-4
Thermal Conductivity		W/mK	DIN 52612	0,24
Exterior Strength		Ohm	DIN VDE 0303,T3	> 1014

Service Life of PP-R Pipes used in Heating Systems

Temperature(°C)	Service Life (Year)	Operating Pressure (Bar)
20	1	30.0
	5	28.1
	10	27.3
	25	28.5
	50	25.7
30	1	25.5
	5	23.9
	10	23.2
	25	22.3
	50	23.8
40	1	21.5
	5	20.2
	10	19.6
	25	18.8
	50	18.3
50	1	18.3
	5	17.0
	10	16.5
	25	15.9
	50	15.4
60	5	15.4
	5	14.3
	10	13.8
	25	13.3
	50	12.7
65	1	14.6
	5	13.6
	10	13.1
	25	12.6
	50	11.1
70	1	13.0
	5	11.9
	10	11.7
	25	10.1
	30	8.8
	50	8.5

Reference Standard : DIN 20000

Cold Water 
Hot Water 

Service Life of PP-R Pipes Used in Heating Systems

Operating Time	Temperature (°C)	Service Life (Year)	Operating Pressure (Bar)
30 Days/Year	75	5	17.27
		10	13.79
		25	11.74
		45	10.18
	80	5	13.50
		10	13.80
		25	11.14
		42.5	9.79
	85	5	12.42
		10	11.87
		25	10.14
		37.5	9.18
	90	5	11.39
		10	10.94
		25	8.86
		35	8.16
60 Days/Year	75	5	14.11
		10	13.57
		25	11.59
		45	10.05
	80	5	13.12
		10	12.54
		25	10.56
		40	9.41
	85	5	12.03
		10	11.52
		25	9.22
		35	8.48
	90	5	11.04
		10	9.76
		25	7.81
		30	7.46
90 Days/Year	75	5	14.02
		10	13.38
		25	11.33
		45	9.82
	80	5	12.80
		10	12.35
		25	10.05
		37.5	9.08
	85	5	11.81
		10	10.72
		25	8.58
		32.5	8.03
	90	5	10.59
		10	8.96
		25	7.17

Greenfit PP-R Fiber Glass Reinforced Pipe

Greenfit PP-R Fiber Glass Reinforced Pipe PP-R/GF/PP-R has three layers, inner and outer layers are made of PP-R, middle layer is made from a special mixture of PP-R and Fiberglass raw materials.

Main Advantages of the PP-R Fiber Glass Reinforced Pipes :

- 1) Easy and fast installation, it Do not require peeling before welding process.
- 2) 75% less linear expansion than a Standard PP-R pipe.
- 3) More stiff than a standard PP-R pipe.
- 4) Lighter than PP-R Aluminium Foil Reinforced Pipe.

Application Areas :

- 1) They are used all over the world and not limited to applications like: Bulk Water and Treated Water, Sewer, Hydro Power installations, Desalination Plants, irrigation, and Industrial corrosive applications.
- 2) These pipes are corrosion resistant, light weight, high strength, smooth bore, have superior hydraulic characteristics and an extended lifespan of more than 150 years.

Welding Time Comparison:

- * Welding Time Comparison experiment was performed in a laboratory environment with \varnothing -20mm Aluminium Foiled PP-R Fiber glass Reinforced Pipe and \varnothing -20mm Aluminium Foiled PP-R Pipe .
- * Calculations were based on 300 weldings similar to installation process of a plumbing system in a single apartment
- * Welding time of P-R Glassfiber Reinforced Pipe: 20.8 sec.
- * Welding time of P-R Aluminium Foiled Pipe: 30.3 sec.
- * Welding time advantage of P-R Glass fiber Reinforced Pipe: 9.5 sec.
- * Total time saved in 300 weldings : 2.850 sec.



Pipe PN 16

CODE	SIZE	S	D	QUANTITY
GF.BR01.DZB.200016	Ø 20	2.8	20.3	140/4.00
GF.BR01.DZB.250016	Ø 25	3.5	25.3	100/4.00
GF.BR01.DZB.320016	Ø 32	4.4	32.3	60/4.00
GF.BR01.DZB.400016	Ø 40	5.5	40.4	40/4.00
GF.BR01.DZB.500016	Ø 50	6.9	50.5	32/4.00
GF.BR01.DZB.630016	Ø 63	8.6	63.6	20/4.00
GF.BR01.DZB.750016	Ø 75	10.3	75.7	16/4.00
GF.BR01.DZB.900016	Ø 90	12.3	90.9	8/4.00
GF.BR01.DZB.110016	Ø 110	15.1	111	4/4.00
GF.BR01.DZB.125016	Ø 125	17.1	126.2	4/4.00
GF.BR01.DZB.160016	Ø 160	21.9	161.2	1/4.00



Pipe PN 20

CODE	SIZE	S	D	QUANTITY
GF.BR01.DZB.200020	Ø 20	3.4	20.3	140/4.00
GF.BR01.DZB.250020	Ø 25	4.2	25.3	100/4.00
GF.BR01.DZB.320020	Ø 32	5.4	32.3	60/4.00
GF.BR01.DZB.400020	Ø 40	6.7	40.4	40/4.00
GF.BR01.DZB.500020	Ø 50	8.3	50.5	32/4.00
GF.BR01.DZB.630020	Ø 63	10.5	63.6	20/4.00
GF.BR01.DZB.750020	Ø 75	12.5	75.7	16/4.00
GF.BR01.DZB.900020	Ø 90	15	90.9	8/4.00
GF.BR01.DZB.110020	Ø 110	18.3	111	4/4.00
GF.BR01.DZB.125020	Ø 125	20.8	126.2	4/4.00
GF.BR01.DZB.160020	Ø 160	26.6	161.2	1/4.00



Composite Pipe PN 20

CODE	SIZE	S	D	QUANTITY
GF.BR01.GFD.200020	Ø 20	2.8	20.3	140/4.00
GF.BR01.GFD.250020	Ø 25	3.5	25.3	100/4.00
GF.BR01.GFD.320020	Ø 32	4.4	32.3	60/4.00
GF.BR01.GFD.400020	Ø 40	5.5	40.4	40/4.00
GF.BR01.GFD.500020	Ø 50	6.9	50.5	32/4.00
GF.BR01.GFD.630020	Ø 63	8.6	63.6	20/4.00
GF.BR01.GFD.750020	Ø 75	10.3	75.7	16/4.00
GF.BR01.GFD.900020	Ø 90	12.3	90.9	8/4.00
GF.BR01.GFD.110020	Ø 110	15.1	111	4/4.00
GF.BR01.GFD.125020	Ø 125	17.1	126.2	4/4.00
GF.BR01.GFD.160020	Ø 160	21.9	161.2	4/4.00



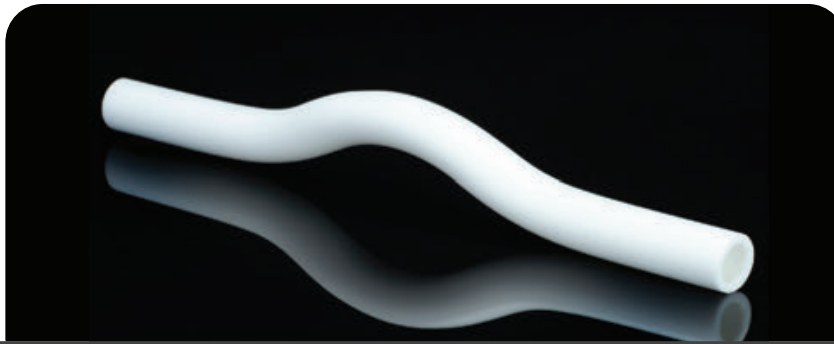
Composite Pipe PN 25

CODE	SIZE	S	D	QUANTITY
GF.BR01.GFD.200025	Ø 20	3.4	20.3	140/4.00
GF.BR01.GFD.250025	Ø 25	4.2	25.3	100/4.00
GF.BR01.GFD.320025	Ø 32	5.4	32.3	60/4.00
GF.BR01.GFD.400025	Ø 40	6.7	40.4	40/4.00
GF.BR01.GFD.500025	Ø 50	8.3	50.5	32/4.00
GF.BR01.GFD.630025	Ø 63	10.5	63.6	20/4.00
GF.BR01.GFD.750025	Ø 75	12.5	75.7	16/4.00
GF.BR01.GFD.900025	Ø 90	15	90.9	8/4.00
GF.BR01.GFD.110025	Ø 110	18.3	111	4/4.00
GF.BR01.GFD.125025	Ø 125	20.8	126.2	4/4.00
GF.BR01.GFD.160025	Ø 160	26.6	161.2	4/4.00



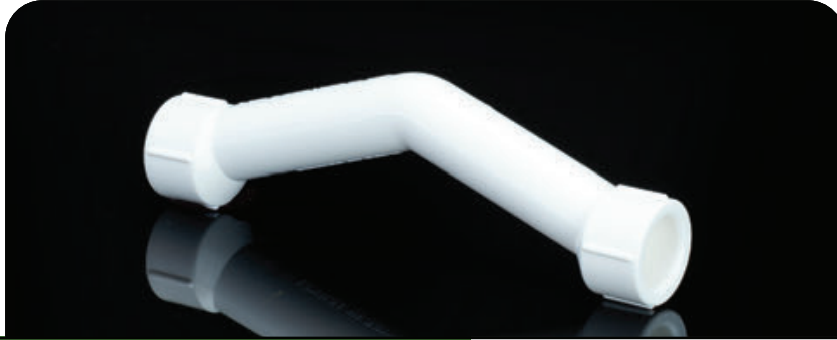
Aluminium Foiled Pipe PN 25

CODE	SIZE	S	D	QUANTITY
GF.BR01.AFD.200025	Ø 20	3.4	20.3	140/4.00
GF.BR01.AFD.250025	Ø 25	4.2	25.3	100/4.00
GF.BR01.AFD.320025	Ø 32	5.4	32.3	60/4.00
GF.BR01.AFD.400025	Ø 40	6.7	40.4	40/4.00
GF.BR01.AFD.500025	Ø 50	8.3	50.5	32/4.00
GF.BR01.AFD.630025	Ø 63	10.5	63.6	20/4.00



Crossover PN 20

CODE	SIZE	S	D	L	QUANTITY
GF.BR01.KVS.200000	Ø 20	3.4	20.3	350	90
GF.BR01.KVS.250000	Ø 25	4.2	25.3	350	60
GF.BR01.KVS.320000	Ø 32	5.4	32.3	350	35
TM.BR01.KVS.400000	Ø 40	6.7	40.4	350	20



Crossover with Socket - Long PN 25

CODE	SIZE	D ₁	E	L	QUANTITY
TM.YP01.MNK.200000	Ø 20	19.5		56	120
TM.YP01.MNK.250000	Ø 25	24.5		63	75
TM.YP01.MNK.320000	Ø 32	31.5		74	40



Crossover with Socket - Short PN 25

CODE	SIZE	ØD ₁	E	L	QUANTITY
GF.YP01.MKK.200000	Ø 20	19.5	14.5	96	200
GF.YP01.MKK.250000	Ø 25	24.5	16	105	120
GF.YP01.MKK.320000	Ø 32	31.5	18	117	60



Crossover with Socket - Short PN 25

CODE	SIZE	ØD ₁	E	L	QUANTITY
GF.YP01.MKK.200000	Ø 20	19.5	14.5	96	200
GF.YP01.MKK.250000	Ø 25	24.5	16	105	120
GF.YP01.MKK.320000	Ø 32	31.5	18	117	60



90° Elbow PN 25

CODE	SIZE	ØD ₁	L	E	QUANTITY
GF.YP01.DRS.200090	Ø 20x90°	23	19.5	14.5	400
GF.YP01.DRS.250090	Ø 25x90°	26	24.5	16	200
GF.YP01.DRS.320090	Ø 32x90°	29	31.5	18	120
GF.YP01.DRS.400090	Ø 40x90°	33	39.4	20.5	60
GF.YP01.DRS.500090	Ø 50x90°	39	49.4	23.5	40
GF.YP01.DRS.630090	Ø 63x90°	54	62.5	27.5	18
GF.YP01.DRS.750090	Ø 75x90°	60	74.7	30	12
GF.YP01.DRS.900090	Ø 90x90°	76	89.7	33	4
GF.YP01.DRS.110090	Ø 110x90°	94	109.7	37	2
GF.YP01.DRS.125090	Ø 125x90°	124.6	110	40	2
GF.YP01.DRS.160090	Ø 160x90°	158.6	260	45	1



45° Elbow PN 25

CODE	SIZE	ØD ₁	E	QUANTITY
GF.YP01.DRS.200045	Ø 20x45°	19.5	14.5	400
GF.YP01.DRS.250045	Ø 25x45°	24.5	16	250
GF.YP01.DRS.320045	Ø 32x45°	31.5	18	120
GF.YP01.DRS.400045	Ø 40x45°	39.4	20.5	80
GF.YP01.DRS.500045	Ø 50x45°	49.4	23.5	40
GF.YP01.DRS.630045	Ø 63x45°	62.5	27.5	20
TM.YP01.DRS.750045	Ø 75x45°	74.7	30	12
TM.YP01.DRS.900045	Ø 90x45°	89.7	33	4
TM.YP01.DRS.110045	Ø 110x45°	109.7	37	2



90° Tail Elbow PN 25

CODE	SIZE	ØD ₁	ØD ₂	L	E	QUANTITY
TM.YP01.DRK.200090	Ø 20x90°	19.5	20.3	23	14.5	300
GF.YP01.DRK.250090	Ø 25x90°	24.5	25.3	25	16	200
TM.YP01.DRK.320090	Ø 32x90°	31.5	32.3	28	18	125



45° Tail Elbow PN 25

CODE	SIZE	ØD ₁	ØD ₂	E	QUANTITY
GF.YP01.DRK.200045	Ø 20x45°	19.5	20.3	14.5	300
GF.YP01.DRK.250045	Ø 25x45°	24.5	25.3	16	200
GF.YP01.DRK.320045	Ø 32x45°	31.5	32.3	18	100



Reduction Elbow PN 25

CODE	SIZE	ØD ₁	E ₁	ØD ₂	L	E ₂	QUANTITY
GF.YP01.DRR.252000	Ø 25/20	24.5	16	19.5	14.5	24	200
GF.YP01.DRR.322000	Ø 32/20	31.5	18	19.5	14.5	26	120
GF.YP01.DRR.322500	Ø 32/25	31.5	18	24.5	16	27	120



Socket PN 25

CODE	SIZE	ØD ₁	L	E	QUANTITY
GF.YP01.MNS.200000	Ø 20	19.5	34	14.5	500
GF.YP01.MNS.250000	Ø 25	24.5	39	16	300
GF.YP01.MNS.320000	Ø 32	31.5	45	18	160
GF.YP01.MNS.400000	Ø 40	39.4	50	20.5	100
GF.YP01.MNS.500000	Ø 50	49.4	58	23.5	50
GF.YP01.MNS.630000	Ø 63	62.5	67	27.5	30
GF.YP01.MNS.750000	Ø 75	74.7	75	30	24
GF.YP01.MNS.900000	Ø 90	89.7	82	33	12
GF.YP01.MNS.110000	Ø 110	109.7	91	37	6
GF.YP01.MNS.125000	Ø 125	123.9	88	40.5	6
GF.YP01.MNS.160000	Ø 160	158.6	97	45	4


Reduction PN 25

CODE	SIZE	ØD	L	E	QUANTITY
GF.YP01.RED.252000	Ø 25/20	19.5	37	14.5	600
GF.YP01.RED.322000	Ø 32/20	19.5	39	14.5	400
GF.YP01.RED.322500	Ø 32/25	24.5	43	16	360
GF.YP01.RED.402000	Ø 40/20	19.5	41	14.5	200
GF.YP01.RED.402500	Ø 40/25	24.5	43	16	200
GF.YP01.RED.403200	Ø 40/32	31.5	48	18	160
GF.YP01.RED.502500	Ø 50/25	24.5	43	16	100
GF.YP01.RED.503200	Ø 50/32	31.5	48	18	100
GF.YP01.RED.504000	Ø 50/40	39.4	52	20.5	100
GF.YP01.RED.633200	Ø 63/32	31.5	48	18	50
GF.YP01.RED.634000	Ø 63/40	39.4	52	20.5	50
GF.YP01.RED.635000	Ø 63/50	49.4	60	23.5	50
GF.YP01.RED.754000	Ø 75/40	39.4	52	20.5	40
GF.YP01.RED.755000	Ø 75/50	49.4	60	23.5	40
GF.YP01.RED.756300	Ø 75/63	62.5	67	27.5	30
GF.YP01.RED.905000	Ø 90/50	49.4	60	23.5	20
GF.YP01.RED.906300	Ø 90/63	62.5	67	27.5	20
GF.YP01.RED.907500	Ø 90/75	74.7	72	30	16
GF.YP01.RED.110630	Ø 110/63	62.5	67	27.5	12
GF.YP01.RED.110750	Ø 110/75	74.7	72	30	12
GF.YP01.RED.110900	Ø 110/90	89.7	90	33	12
GF.YP01.RED.125900	Ø 125/90	89.2	120	35.5	10
GF.YP01.RED.125110	Ø 125/110	109	120	41.5	8
GF.YP01.RED.160110	Ø 160/110	129	140	48.5	6
GF.YP01.RED.160125	Ø 160/125	134	146	54.5	6



Reduced Tee PN 25

CODE	SIZE	ØD ₁	E ₁	ØD ₂	E ₂	ØD ₃	E ₃	QUANTITY
GF.YP01.ITE.252020	25x20x20	24.5	16	19.5	14.5	19.5	14.5	200
GF.YP01.ITE.252025	25x20x25	24.5	16	19.5	14.5	24.5	16	180
TM.YP01.ITE.252520	25x25x20	24.5	16	24.5	16	19.5	14.5	180
GF.YP01.ITE.322020	32x20x20	31.5	18	19.5	14.5	19.5	14.5	100
GF.YP01.ITE.322025	32x20x25	31.5	18	19.5	14.5	24.5	16	100
GF.YP01.ITE.322032	32x20x32	31.5	18	19.5	14.5	31.5	18	100
GF.YP01.ITE.322520	32x25x20	31.5	18	24.5	16	19.5	14.5	100
GF.YP01.ITE.322525	32x25x25	31.5	18	24.5	16	24.5	16	100
GF.YP01.ITE.322532	32x25x32	31.5	18	24.5	16	31.5	18	100
GF.YP01.ITE.402040	40x20x40	39.4	20.5	19.5	14.5	39.4	20.5	60
GF.YP01.ITE.402540	40x25x40	39.4	20.5	24.5	16	39.4	20.5	60
GF.YP01.ITE.403240	40x32x40	39.4	20.5	31.5	18	39.4	20.5	50
GF.YP01.ITE.502050	50x20x50	49.4	23.5	19.5	14.5	49.4	23.5	30
GF.YP01.ITE.502550	50x25x50	49.4	23.5	24.5	16	49.4	23.5	30
GF.YP01.ITE.503250	50x32x50	49.4	23.5	31.5	18	49.4	23.5	30
GF.YP01.ITE.504050	50x40x50	49.4	23.5	39.4	20.5	49.4	23.5	20
GF.YP01.ITE.632063	63x20x63	62.5	27.5	19.5	14.5	62.5	27.5	20
GF.YP01.ITE.632563	63x25x63	62.5	27.5	24.5	16	62.5	27.5	20
GF.YP01.ITE.633263	63x32x63	62.5	27.5	31.5	18	62.5	27.5	20
GF.YP01.ITE.634063	63x40x63	62.5	27.5	39.4	20.5	62.5	27.5	20
GF.YP01.ITE.635063	63x50x63	62.5	27.5	49.4	23.5	62.5	27.5	16
GF.YP01.ITE.752575	75x25x75	74.4	30	24.5	18	74.4	30	10
GF.YP01.ITE.753275	75x32x75	74.4	30	31.5	20.5	74.4	30	10
GF.YP01.ITE.754075	75x40x75	74.4	30	39.5	23.5	74.4	30	10
GF.YP01.ITE.755075	75x50x75	74.4	30	49.4	27.5	74.4	30	10
GF.YP01.ITE.756375	75x63x75	74.4	33	62.5	20.5	74.4	33	10
GF.YP01.ITE.903290	90x32x90	89.7	33	31.5	23.5	89.7	33	5
GF.YP01.ITE.904090	90x40x90	89.7	33	39.5	27.5	89.7	33	5
GF.YP01.ITE.905090	90x50x90	89.7	33	49.4	30	89.7	37	5
GF.YP01.ITE.906390	90x63x90	89.7	37	62.5	23.5	89.7	37	4
GF.YP01.ITE.907590	90x75x90	89.7	37	74.7	27.5	89.7	37	4
GF.YP01.ITE.114011	110x40x110	109.7	37	39.5	30	109.7	37	2
GF.YP01.ITE.115011	110x50x110	109.7	37	49.4	33	109.7	37	2
GF.YP01.ITE.116311	110x63x110	109.7	37	62.5	37.5	109.7	37	2
GF.YP01.ITE.117511	110x75x110	109.7	37	74.7	30	109.7	37	2
GF.YP01.ITE.119011	110x90x110	109.7	37	87.7	33	109.7	37	2



Tee PN 25

CODE	SIZE	ØD ₁	L	E	QUANTITY
GF.YP01.TEE.200000	Ø 20	19.5	56	14.5	250
GF.YP01.TEE.250000	Ø 25	24.5	63	16	150
GF.YP01.TEE.320000	Ø 32	31.5	74	18	75
GF.YP01.TEE.400000	Ø 40	39.4	86	20.5	40
GF.YP01.TEE.500000	Ø 50	49.4	102	23.5	25
GF.YP01.TEE.630000	Ø 63	62.5	124	27.5	16
GF.YP01.TEE.750000	Ø 75	74.7	137	30	10
GF.YP01.TEE.900000	Ø 90	89.7	160	33	4
GF.YP01.TEE.110000	Ø 110	109.7	190	37	2
GF.YP01.TEE.125000	Ø 125	123.9	221	40.5	2
GF.YP01.TEE.160000	Ø 160	158.6	280	45	1



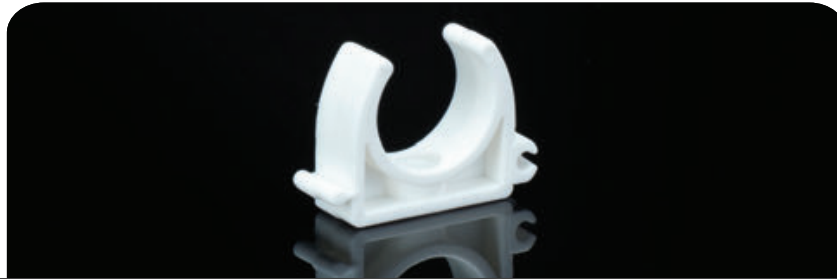
Double Tee PN 25

CODE	SIZE	ØD ₁	E ₁	ØD ₂	E ₂	ØD ₃	E ₃	QUANTITY
GF.YP01.CTE.202020	Ø 20x20x20	19.5	14.5	19.5	14.5	19.5	90	80
GF.YP01.CTE.252020	Ø 25x20x20	24.5	16	19.5	14.5	19.5	90	80
GF.YP01.CTE.252025	Ø 25x20x25	24.5	16	19.5	14.5	24.5	90	80
GF.YP01.CTE.252520	Ø 25x25x20	24.5	16	24.5	16	19.5	90	80
GF.YP01.CTE.252525	Ø 25x25x25	24.5	16	24.5	16	24.5	90	80



Double Clamp PN 25

CODE	SIZE	ØD ₁	L	QUANTITY
GF.YP01.KPC.200000	Ø 20 mm	20-22	60	625
GF.YP01.KPC.250000	Ø 25 mm	25-27	65	400
GF.YP01.KPC.320000	Ø 32 mm	32-34	72	200



Single Clamp PN 25

CODE	SIZE	ØD ₁	L	QUANTITY
TM.YP01.KPT.160000	Ø 16 mm	16	28	1000
GF.YP01.KPT.200000	Ø 20 mm	20	32	1000
GF.YP01.KPT.250000	Ø 25 mm	25	36	900
GF.YP01.KPT.320000	Ø 32 mm	32	39	500
TM.YP01.KPT.400000	Ø 40 mm	40	46	400



Clamp With Cover PN 25

CODE	SIZE	ØD ₁	L	QUANTITY
TM.YP01.KKP.200000	Ø 20 mm	20	32	750
TM.YP01.KKP.250000	Ø 25 mm	25	36	600
TM.YP01.KKP.320000	Ø 32 mm	32	39	300
TM.YP01.KKP.400000	Ø 40 mm	40	41	200
TM.YP01.KKP.500000	Ø 50 mm	50	45	120



End Plug PN 25

CODE	SIZE	D	L	QUANTITY
GF.YP01.KOT.200000	Ø 20	20	25	700
GF.YP01.KOT.250000	Ø 25	25	15	600
GF.YP01.KOT.320000	Ø 32	32	15	400



End Plug - Long PN 25

CODE	SIZE	D	L	QUANTITY
GF.YP01.KTU.200000	Ø 20	20	56	250



Stopend PN 25

CODE	SIZE	ØD ₁	E	L	QUANTITY
GF.YP01.KAB.200000	Ø 20	19.5	14.5	21	600
GF.YP01.KAB.250000	Ø 25	24.5	16	23	400
GF.YP01.KAB.320000	Ø 32	31.5	18	25	250
GF.YP01.KAB.400000	Ø 40	39.4	20.5	33	150
GF.YP01.KAB.500000	Ø 50	49.4	23.5	39	80
GF.YP01.KAB.630000	Ø 63	62.5	27.5	47	40
GF.YP01.KAB.750000	Ø 75	74.7	30	52	25
GF.YP01.KAB.900000	Ø 90	89.7	33	58	18
GF.YP01.KAB.110000	Ø 110	109.7	37	66	9



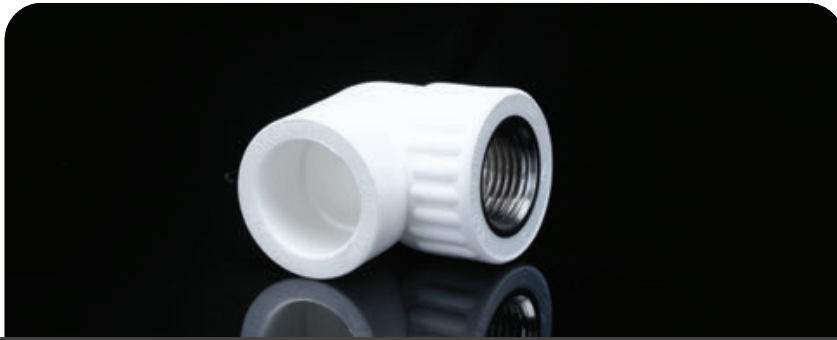
Pipe Type Check Valve

CODE	SIZE	ØD ₁	E ₁	L	QUANTITY
TM.M001.TCV.200012	20 mm (1/2)				500
TM.M001.TCV.250034	25 mm (3/4)				500



Check Valve With Swing PN 25

CODE	SIZE	ØD ₁	L	E	QUANTITY
TM.M001.CCV.200000	Ø 20	19.5	80	16.5	100
TM.M001.CCV.250000	Ø 25	24.5	84	17	75
TM.M001.CCV.320000	Ø 32	31.5	84	18	50



Female Elbow PN 25

CODE	SIZE	ØD ₁	L	E	QUANTITY
GF.MT01.DRD.200012	Ø 20x1/2"	19.5	35	14.5	150
GF.MT01.DRD.200034	Ø 20x3/4"	19.5	35	14.5	100
GF.MT01.DRD.250012	Ø 25x1/2"	24.5	40	16	100
GF.MT01.DRD.250034	Ø 25x3/4"	24.5	40	16	100
GF.MT01.DRD.250100	Ø 25x1"	24.5	40	16	60
GF.MT01.DRD.320012	Ø 32x1/2"	31.5	45	18	60
GF.MT01.DRD.320034	Ø 32x3/4"	31.5	45	18	60
GF.MT01.DRD.320100	Ø 32x1"	31.5	45	18	60



Male Elbow PN 25

CODE	SIZE	ØD ₁	L	E	QUANTITY
GF.MT01.DRE.200012	Ø 20x1/2"	19.5	35	14.5	150
GF.MT01.DRE.200034	Ø 20x3/4"	19.5	35	14.5	75
GF.MT01.DRE.250012	Ø 25x1/2"	24.5	40	16	100
GF.MT01.DRE.250034	Ø 25x3/4"	24.5	40	16	80
GF.MT01.DRE.250100	Ø 25x1"	24.5	40	16	60
GF.MT01.DRE.320012	Ø 32x1/2"	31.5	45	18	45
GF.MT01.DRE.320034	Ø 32x3/4"	31.5	45	18	45
GF.MT01.DRE.320100	Ø 32x1"	31.5	45	18	45



Female Nipple PN 25

CODE	SIZE	ØD ₁	L	E	QUANTITY
GF.MT01.NPD.200012	Ø 20x1/2"	19.5	38	14.5	200
GF.MT01.NPD.200034	Ø 20x3/4"	19.5	38	14.5	100
GF.MT01.NPD.250012	Ø 25x1/2"	24.5	42	16	180
GF.MT01.NPD.250034	Ø 25x3/4"	24.5	42	16	120
GF.MT01.NPD.250100	Ø 25x1"	31.5	44	16	80
GF.MT01.NPD.320012	Ø 32x1/2"	31.5	44	16	80
GF.MT01.NPD.320034	Ø 32x3/4"	31.5	44	16	80
GF.MT01.NPD.320100	Ø 32x1"	39.4	44	16	80
GF.MT01.AND.400114	Ø 40x1-1/4"	39.4	63	20.5	40
GF.MT01.AND.500112	Ø 50x1-1/2"	49.4	70	23.5	20
GF.MT01.AND.630200	Ø 63x2"	62.5	75	27.5	12
GF.MT01.AND.750212	Ø 75x2-1/2"	74.7	80	30	8
GF.MT01.AND.900300	Ø 90x3"	89.7	105	33	4
GF.MT01.AND.110400	Ø 110x4"	109.7	110	37	2



Male Nipple PN 25

CODE	SIZE	ØD ₁	L	E	QUANTITY
GF.MT01.NPE.200012	Ø 20x1/2"	19.5	51	14.5	150
GF.MT01.NPE.200034	Ø 20x3/4"	19.5	51	14.5	100
GF.MT01.NPE.250012	Ø 25x1/2"	24.5	53	16	150
GF.MT01.NPE.250034	Ø 25x3/4"	24.5	55	16	120
GF.MT01.NPE.250100	Ø 25x1"	24.5	55	16	80
GF.MT01.NPE.320012	Ø 32x1/2"	31.5	60	18	50
GF.MT01.NPE.320034	Ø 32x3/4"	31.5	60	18	50
GF.MT01.NPE.320100	Ø 32x1"	31.5	60	18	50
GF.MT01.ANE.400114	Ø 40x1 1/4"	39.4	80	20.5	32
GF.MT01.ANE.500112	Ø 50x1 1/2"	49.4	90	23.5	20
GF.MT01.ANE.630200	Ø 63x2"	62.5	95	27.5	12
GF.MT01.ANE.750212	Ø 75x2 1/2"	74.7	105	30	6
GF.MT01.ANE.900300	Ø 90x3"	89.7	120	33	4
GF.MT01.ANE.110400	Ø 110x4"	109.7	140	37	2



Male Battery Connection PN 25

CODE	SIZE	ØD ₁	L	E	QUANTITY
GF.MT01.3BE.200012	Ø 20x1/2"	19.5	30	14.5	100
GF.MT01.3BE.200034	Ø 20x3/4"	19.5	30	14.5	80
GF.MT01.3BE.250012	Ø 25x1/2"	24.5	33	16	80
TM.MT01.3BE.250034	Ø 25x3/4"	31.5	38	18	80



Female Battery Connection PN 25

CODE	SIZE	ØD ₁	L	E	QUANTITY
GF.MT01.3BD.200012	Ø 20x1/2"	19.5	30	14.5	100
GF.MT01.3BD.250012	Ø 25x1/2"	24.5	33	16	80
TM.MT01.3BD.250034	Ø 25x3/4"	31.5	38	18	80



Male Tee PN 25

CODE	SIZE	ØD ₁	L	E	QUANTITY
GF.MT01.ETE.200012	Ø 20x1/2"	19.5	54	14.5	100
GF.MT01.ETE.200034	Ø 20x3/4"	19.5	54	14.5	60
GF.MT01.ETE.250012	Ø 25x1/2"	24.5	65	16	60
GF.MT01.ETE.250034	Ø 25x3/4"	24.5	65	16	60
GF.MT01.ETE.320012	Ø 32x1/2"	31.5	75	18	40
GF.MT01.ETE.320034	Ø 32x3/4"	31.5	75	18	40
GF.MT01.ETE.320100	Ø 32x1"	31.5	75	18	40
GF.MT01.ETE.500012	Ø 50x1/2"	49.4	100	23.5	12



Female Tee PN 25

CODE	SIZE	ØD ₁	L	E	QUANTITY
GF.MT01.DTE.200012	Ø 20x1/2"	19.5	54	14.5	120
GF.MT01.DTE.200034	Ø 20x3/4"	19.5	54	14.5	75
GF.MT01.DTE.250012	Ø 25x1/2"	24.5	65	16	75
GF.MT01.DTE.250034	Ø 25x3/4"	24.5	65	16	75
GF.MT01.DTE.320012	Ø 32x1/2"	31.5	75	18	40
GF.MT01.DTE.320034	Ø 32x3/4"	31.5	75	18	40
GF.MT01.DTE.320100	Ø 32x1"	31.5	75	18	40
GF.MT01.DTE.500012	Ø 50x1/2"	49.4	100	23.5	12
GF.MT01.DTE.500034	Ø 50x3/4"	49.4	100	23.5	12
GF.MT01.DTE.630012	Ø 63x1/2"	62.5	110	27.5	8
GF.MT01.DTE.630034	Ø 63x3/4"	62.5	110	27.5	8
GF.MT01.DTE.630100	Ø 63x1"	62.5	110	27.5	8



Elbow With Nut PN 25

CODE	SIZE	ØD ₁	L	E	QUANTITY
GF.M001.DRH.200012	Ø 20x1/2"	19.5	35	14.5	150
GF.M001.DRH.200034	Ø 20x3/4"	19.5	35	14.5	80
GF.M001.DRH.250034	Ø 25x3/4"	24.5	40	16	80
TM.M001.DRH.320100	Ø 32x1"	31.5	45	18	50



Nipple With Nut PN 25

CODE	SIZE	ØD ₁	L	E	QUANTITY
GF.M001.NPH.200012	Ø 20x1/2"	19.5	45	14.5	200
GF.M001.NPH.200034	Ø 20x3/4"	19.5	45	14.5	100
TM.M001.NPH.250012	Ø 25x1/2"	24.5	50	16	80
GF.M001.NPH.250034	Ø 25x3/4"	24.5	50	16	100
TM.M001.NPH.250100	Ø 25x1"	24.5	50	16	80
TM.M001.NPH.320100	Ø 32x1"	31.5	55	18	60



Radiator Valve Elbow PN 25

CODE	SIZE	ØD ₁	L ₁	L	E	QUANTITY
TM.MV01.RVD.200012	Ø 20x1/2"	19.5	83	87.5	14.5	50
TM.MV01.RVD.250012	Ø 25x1/2"	24.5	85	87.5	16	50
TM.MV01.RVD.250034	Ø 25x3/4"	24.5	91	91	16	40



Radiator Valve Straight PN 25

CODE	SIZE	ØD ₁	L ₁	L ₂	E	QUANTITY
TM.MV01.RVN.200012	Ø 20x1/2"	19.5	67	89	14.5	50
TM.MV01.RVN.250012	Ø 25x1/2"	24.5	67	91	16	50
TM.MV01.RVN.250034	Ø 25x3/4"	24.5	72	94	16	40



Female Double Battery Connection Thick PN 25

CODE	SIZE	ØD ₁	L	E	QUANTITY
GF.MT01.CBD.200012	Ø 20x1/2"	19.5	150	14.5	20
GF.MT01.CBD.200034	Ø 20x3/4"	19.5	150	14.5	20
GF.MT01.CBD.250012	Ø 25x1/2"	24.5	150	16	20
GF.MT01.CBD.250034	Ø 25x3/4"	24.5	150	16	20



Male Double Battery Connection Thick PN 25

CODE	SIZE	ØD ₁	L	E	QUANTITY
GF.MT01.CBE.200012	Ø 20x1/2"	19.5	150	14.5	20
GF.MT01.CBE.200034	Ø 20x3/4"	19.5	150	14.5	20
GF.MT01.CBE.250012	Ø 25x1/2"	24.5	150	16	20
GF.MT01.CBE.250034	Ø 25x3/4"	24.5	150	16	20



Female Battery Connection Thin PN 25

CODE	SIZE	ØD ₁	L	E	QUANTITY
GF.MT01.UBD.200012	Ø 20x1/2"	19.5	150	14.5	24
TM.MT01.UBD.200034	Ø 20x3/4"	19.5	150	14.5	24
GF.MT01.UBD.250012	Ø 25x1/2"	24.5	150	16	20
TM.MT01.UBD.250034	Ø 25x3/4"	24.5	150	18	20



Male Double Battery Connection Thin PN 25

CODE	SIZE	ØD ₁	L	E	QUANTITY
GF.MT01.UBE.200012	Ø 20x1/2"	19.5	150	14.5	24
GF.MT01.UBE.200034	Ø 20x3/4"	19.5	150	14.5	24
TM.MT01.UBE.250012	Ø 25x1/2"	24.5	150	16	20
TM.MT01.UBE.250034	Ø 25x3/4"	24.5	150	16	20



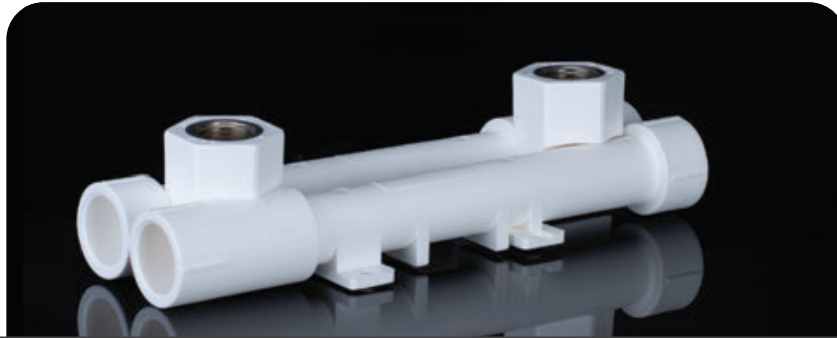
10 cm Male Double Battery Connection PN 25

CODE	SIZE	ØD ₁	L	E	QUANTITY
TM.MT01.KBE.200012	Ø 20x1/2"	19.5	100	14.5	30
TM.MT01.KBE.200034	Ø 20x3/4"	19.5	100	14.5	30
TM.MT01.KBE.250012	Ø 25x1/2"	24.5	100	16	30
TM.MT01.KBE.250034	Ø 25x3/4"	24.5	100	16	30



10 cm Female Double Battery Connection PN 25

CODE	SIZE	ØD ₁	L	E	QUANTITY
GF.MT01.KBD.200012	Ø 20x1/2"	19.5	100	14.5	30
TM.MT01.KBD.200034	Ø 20x3/4"	19.5	100	14.5	30
GF.MT01.KBD.250012	Ø 25x1/2"	24.5	100	16	30
TM.MT01.KBD.250034	Ø 25x3/4"	24.5	100	16	30



Adjustable Battery PN 25

CODE	SIZE	ØD ₁	L ₁	L ₂	L ₃	E	QUANTITY
GF.MT01.BTA.200012	Ø 20x1/2"	19.5	105	135	150	14.5	12
GF.MT01.BTA.250012	Ø 25x1/2"	24.5	105	135	150	16	10



Cross With Metal PN 25

CODE	SIZE	ØD ₁	E ₁	ØD ₂	E ₂	L	QUANTITY
GF.MT01.DIS.500012	Ø 50x1/2"	49.4	23.5	-	-	99	12
GF.MT01.DIS.500100	Ø 50x1"	49.4	23.5	-	-	99	12
GF.MT01.DIS.500034	Ø 50x3/4"	49.4	23.5	-	-	99	12
GF.MT01.DIS.630012	Ø 63x1/2"	62.5	27.5	-	-	110	8
GF.MT01.DIS.630034	Ø 63x3/4"	62.5	27.5	-	-	110	8



Plastic Ball Valve PN 25

CODE	SIZE	ØD ₁	L	E	QUANTITY
GF.MV01.KRV.200012	Ø 20	19.5	70	14.5	80
GF.MV01.KRV.250034	Ø 25	24.5	80	16	60
TM.MV01.KRV.320100	Ø 32	31.5	90	18	40
TM.MV01.KRV.400114	Ø 40	39.4	105	20.5	10
TM.MV01.KRV.500112	Ø 50	49.4	125	23.5	6
TM.MV01.KRV.630200	Ø 63	62.5	150	27.5	4
TM.MV01.KRV.750212	Ø 75	74.4	165	30	3



Recorded Metallic Ball Valve

CODE	SIZE	ØD ₁	L	E	QUANTITY
TM.MV01.RKV.200012	Ø 20"	19	26	19	50
TM.MV01.RKV.250034	Ø 25"	24	34	20.5	32
TM.MV01.RKV.320100	Ø 32"	32	32	21.3	24



Chrome Plated Valve PN 25

CODE	SIZE	ØD ₁	L	E	QUANTITY
GF.MV01.MKU.200012	Ø 20x1/2"	19.5	63	14.5	24
GF.MV01.MKU.250034	Ø 25x3/4"	24.5	71	16	20
GF.MV01.MKU.320100	Ø 32x1"	31.5	85	18	16



Chrome Plated Valve Decorative PN 25

CODE	SIZE	ØD ₁	L	E	QUANTITY
GF.MV01.AKV.200012	Ø 20x1/2"	19.5	63	14.5	30
TM.MV01.AKV.200034	Ø 20x3/4"	19.5	63	14.5	20
GF.MV01.AKV.250034	Ø 25x3/4"	24.5	71	16	25
GF.MV01.AKV.320100	Ø 32x1"	31.5	85	18	16



Stop Valve PN 25

CODE	SIZE	ØD ₁	L	E	QUANTITY
GF.MV01.KVM.200012	Ø 20x1/2"	19.5	63	14.5	50
GF.MV01.KVM.250034	Ø 25x3/4"	24.5	71	16	32
GF.MV01.KVM.320100	Ø 32x1"	31.5	85	18	24
TM.MV01.KVM.400114	Ø 40x1"	39.4	95	20.5	15



Checkvalve Female PN 25

CODE	SIZE	ØD ₁	ØD ₂	L	E	QUANTITY
GF.M001.DCV.200012	Ø 20x1/2"	19.5	20.3	72	14.5	90
GF.M001.DCV.250034	Ø 25x3/4"	24.5	25.3	84	16	60
TM.M001.DCV.320100	Ø 32x1"	31.5	32.3	100	18	25



Checkvalve Male PN 25

CODE	SIZE	ØD ₁	L	E	QUANTITY
GF.M001.ECV.200012	Ø 20x1/2"	19.5	72	14.5	90
GF.M001.ECV.250034	Ø 25x3/4"	24.5	84	16	60
TM.M001.ECV.320100	Ø 32x1"	31.5	100	18	25



Male Filter PN 25

CODE	SIZE	ØD ₁	ØD ₂	L	E	QUANTITY
GF.M001.EFL.200012	Ø 20"	19.5	20.3	72	14.5	90
GF.M001.EFL.250034	Ø 25"	24.5	25.3	84	16	60
TM.M001.EFL.320100	Ø 32"	31.5	32.3	100	18	25



Female Filter PN 25

CODE	SIZE	ØD ₁	L	E	QUANTITY
GF.M001.DFL.200012	Ø 20"	19.5	72	14.5	90
GF.M001.DFL.250034	Ø 25"	24.5	84	16	60
TM.M001.DFL.320100	Ø 32"	31.5	100	18	25


Transition Union Male PN 25

CODE	SIZE	ØD ₁	L	E	QUANTITY
GF.M001.EMO.200012	Ø 20x1/2"	19.5	60	14.5	160
GF.M001.EMO.200034	Ø 20x3/4"	19.5	62	14.5	150
GF.M001.EMO.200100	Ø 20x1"	19.5	65	14.5	80
GF.M001.EMO.250012	Ø 25x1/2"	24.5	65	16	80
GF.M001.EMO.250034	Ø 25x3/4"	24.5	65	16	80
GF.M001.EMO.250100	Ø 25x1"	24.5	67	16	80
GF.M001.EMO.320012	Ø 32x1/2"	31.5	65	18	80
GF.M001.EMO.320034	Ø 32x3/4"	31.5	68	18	80
GF.M001.EMO.320100	Ø 32x1"	31.5	70	18	80
GF.M001.EMO.400100	Ø 40x1"	39.4	73	20.5	40
GF.M001.EMO.400114	Ø 40x1 1/4"	39.4	75	20.5	40
GF.M001.EMO.500112	Ø 50x1 1/2"	49.4	80	23.5	20
GF.M001.EMO.630200	Ø 63x2"	62.5	83	27	10


Transition Union Female PN 25

CODE	SIZE	ØD ₁	L	E	QUANTITY
GF.M001.DMO.200012	Ø 20x1/2"	19.5	50	14.5	160
GF.M001.DMO.200034	Ø 20x3/4"	19.5	52	14.5	150
GF.M001.DMO.200100	Ø 20x1"	19.5	52	14.5	80
GF.M001.DMO.250012	Ø 25x1/2"	24.5	55	16	100
GF.M001.DMO.250034	Ø 25x3/4"	24.5	55	16	80
GF.M001.DMO.250100	Ø 25x1"	24.5	56	16	80
GF.M001.DMO.320012	Ø 32x1/2"	31.5	58	18	80
GF.M001.DMO.320034	Ø 32x3/4"	31.5	58	18	80
GF.M001.DMO.320100	Ø 32x1"	31.5	60	18	80
GF.M001.DMO.400100	Ø 40x1"	39.4	63	20.5	40
GF.M001.DMO.400114	Ø 40x1 1/4"	39.4	65	20.5	40
GF.M001.DMO.500112	Ø 50x1 1/2"	49.4	70	23.5	20
GF.M001.DMO.630200	Ø 63x2"	62.5	75	27	10



Transition Union Two Side Plastic PN 25

CODE	SIZE	ØD ₁	E ₁	L	QUANTITY
TM.M001.CRP.200012	Ø 20x1/2"	19.5	14.5	40	100
TM.M001.CRP.250034	Ø 25x3/4"	24.5	16	48	75
TM.M001.CRP.320100	Ø 32x1"	31.5	18	60	60



Transition Union Two-Side Welded PN 25

CODE	SIZE	ØD ₁	L	E	QUANTITY
GF.M001.CRM.200012	Ø 20x1/2"	19.5	56	14.5	80
GF.M001.CRM.250034	Ø 25x3/4"	24.5	59	16	75
GF.M001.CRM.320100	Ø 32x1"	31.5	60	18	50
GF.M001.CRM.400114	Ø 40x1/4"	39.4	63	20.5	30



PEX - B Pipe Crosslink

CODE	SIZE	ØD ₁	E ₁	ØD ₂	E ₂	L	QUANTITY
TPX1000001620	Ø 16.2	-	-	-	-	-	160
TPX1000001622	Ø 16x2.2	-	-	-	-	-	160
TPX1000001720	Ø 17x2	-	-	-	-	-	160
TPX1000001820	Ø 18x2	-	-	-	-	-	160
TPX1000002020	Ø 20x2	-	-	-	-	-	160
TPX1000002523	Ø 25x2.3	-	-	-	-	-	160
TPX1000003229	Ø 32x2.9	-	-	-	-	-	160



PEX - B Oxygen Barrier Pipe

CODE	SIZE	ØD ₁	E ₁	ØD ₂	E ₂	L	QUANTITY
TPX1000001620	Ø 16.2	-	-	-	-	-	160
TPX1000001622	Ø 16x2,2	-	-	-	-	-	160
TPX1000001720	Ø 17x2	-	-	-	-	-	160
TPX1000001820	Ø 18x2	-	-	-	-	-	160
TPX1000002020	Ø 20x2	-	-	-	-	-	160
TPX1000002523	Ø 25x2,3	-	-	-	-	-	160
TPX1000003229	Ø 32x2,9	-	-	-	-	-	160



Welding Kit

CODE	SIZE
01-TMK000002040	20mm - 25mm - 32mm - 40mm
02-TMK000001663	16mm - 20mm - 25mm - 32mm - 40mm - 50mm - 63mm
03-TMK000001675	16mm - 20mm - 25mm - 32mm - 40mm - 50mm - 63mm - 75mm
04-TMK000001663	16mm - 20mm - 25mm - 32mm - 40mm - 50mm - 63mm



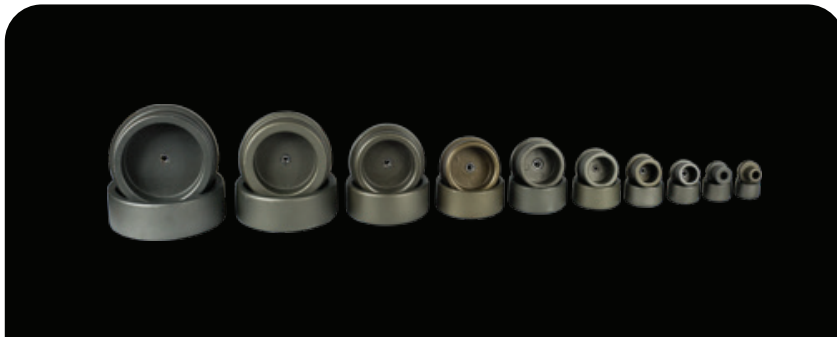
Test Pressure Pump

CODE	
TM.KG00.TPM.000030	30



Pipe Cutter

CODE	SIZE
TM.KG00.DMK.000011	0.42
TM.KG00.PMK.000011	0.42
TM.KG00.CMK.000012	0.42
TM.KG00.MKP.000032	0.42



Welding Tool

CODE	SIZE
TM.KG00.KPF.000016	16
TM.KG00.KPF.000020	20
TM.KG00.KPF.000025	25
TM.KG00.KPF.000032	32
TM.KG00.KPF.000040	40
TM.KG00.KPF.000050	50
TM.KG00.KPF.000063	63
TM.KG00.KPF.000075	75
TM.KG00.KPF.000090	90
TM.KG00.KPF.000110	11
TM.KG00.KPF.000125	125
TM.KG00.KPF.000160	160



Repair Tool

CODE

TM.TG00.TAP.000000



Peeling Tool

CODE

SIZE

TM.KG00.BTA.200025	Ø 20x25
TM.KG00.BTA.320040	Ø 32x40
TM.KG00.BTA.500063	Ø 50x63

PVC - U

PVC-U Waste Water Pipes are generally produced in light grey color, also can be produced in different colors upon request.

Production standards of PVC-U Waste Water Pipes and Fittings are in strict conformity with TSE (Turkish Standards Institution) TS 275-1 EN 1329-1, and they are under warranty of GREENFIT PLASTIK, who is Certified by ISO 9001-2015 .







PVC Elbow 45

Product Code	Dimension	QUANTITY
GF.AS01.DSK.000050045	50/45	250
GF.AS01.DSK.000075045	75/45	100
GF.AS01.DSK.000110045	110/45	40
TM.AS01.DSK.000125045	125/45	25
GF.AS01.DSK.000160045	160/45	15
TM.AS01.DSK.000200045	200/45	5



PVC Elbow 87

Product Code	Dimension	QUANTITY
GF.AS01.DSK.000050087	50/87	200
GF.AS01.DSK.000075087	75/87	90
GF.AS01.DSK.000110087	110/ 87	30
TM.AS01.DSK.000125087	125/ 87	20
GF.AS01.DSK.000160087	160/ 87	10
TM.AS01.DSK.000200087	200/87	5



PVC Branch 45

Product Code	Dimension	QUANTITY
GF.AS01.TCT.050050045	50/50/45	125
TM.AS01.TCT.075050045	75/50/45	50
GF.AS01.TCT.075075045	75/75/45	45
TM.AS01.TCT.110050045	110/50/45	30
TM.AS01.TCT.110075045	110/75/45	15
GF.AS01.TCT.110110045	110/110/45	15
TM.AS01.TCT.125110045	125/110/45	5
TM.AS01.TCT.125125045	125/125/45	5
GF.AS01.TCT.160110045	160/110/45	9
TM.AS01.TCT.160125045	160/125/45	5
TM.AS01.TCT.160160045	160/160/45	5



PVC Branch 87

Product Code	Dimension	QUANTITY
GF.AS01.TCT.050050087	50/50/87	125
TM.AS01.TCT.075050087	75/50/87	50
GF.AS01.TCT.075075087	75/75/87	50
TM.AS01.TCT.110050087	110/50/87	30
TM.AS01.TCT.110075087	110/75/87	20
GF.AS01.TCT.110110087	110/110/87	20
TM.AS01.TCT.125110087	125/110/87	15
TM.AS01.TCT.125125087	125/125/87	5
GF.AS01.TCT.160110087	160/110/87	12
TM.AS01.TCT.160125087	160/125/87	5
TM.AS01.TCT.160160087	160/160/87	5
TM.AS01.TCT.200200087	200/200/87	4



PVC Double Branch 45

Product Code	Dimension	QUANTITY
TM.AS01.CCT.505050045	50/50/45	70
TM.AS01.CCT.755050045	75/50/45	50
TM.AS01.CCT.757575045	75/75/45	30
TM.AS01.CCT.115050045	110/50/45	20
TM.AS01.CCT.117575045	110/75/45	15
TM.AS01.CCT.111111045	110/110/45	10
TM.AS01.CCT.121111045	125/110/45	5
TM.AS01.CCT.121212045	125/125/45	5
TM.AS01.CCT.161111045	160/110/45	5
TM.AS01.CCT.161212045	160/125/45	5
TM.AS01.CCT.161616045	160/160/45	4



PVC Double Branch 87

Product Code	Dimension	QUANTITY
TM.AS01.CCT.505050087	50/50/87	70
TM.AS01.CCT.755050087	75/50/ 87	50
TM.AS01.CCT.757575087	75/75/ 87	30
TM.AS01.CCT.115050087	110/50/ 87	20
TM.AS01.CCT.117575087	110/75/ 87	20
TM.AS01.CCT.111111087	110/110/ 87	10
TM.AS01.CCT.121111087	125/110/ 87	5
TM.AS01.CCT.121212087	125/125/ 87	5
TM.AS01.CCT.161111087	160/110/ 87	5
TM.AS01.CCT.161212087	160/125/ 87	5
TM.AS01.CCT.161616087	160/160/ 87	5



PVC Siphon 'S' 45 / PVC Siphon 'S' 87

Product Code	Dimension	QUANTITY
GF.AS01.SSF.075075045	75/75/45	30
GF.AS01.SSF.075075087	110/110/45	30
GF.AS01.SSF.110110045	75/75/87	10
GF.AS01.SSF.110110087	110/110/87	10



PVC Light Siphon 'S' 45 / PVC Light Siphon 'S' 87

Product Code	Dimension	QUANTITY
GF.AS01.LSS.110110045	110/110/45	10
GF.AS01.LSS.110110087	110/110/87	10



PVC Sliding Socket

Product Code	Dimension	QUANTITY
GF.AS01.KMN.500000000	50 mm	200
GF.AS01.KMN.750000000	75 mm	100
GF.AS01.KMN.110000000	110 mm	40
TM.AS01.KMN.125000000	125 mm	30
GF.AS01.KMN.160000000	160 mm	15
TM.AS01.KMN.200000000	200 mm	8
TM.AS01.KMN.250000000	250 mm	5



PVC Reduction

Product Code	Dimension	QUANTITY
TM.AS01.RDS.000075050	75/50	150
TM.AS01.RDS.000110050	110/50	70
TM.AS01.RDS.000110075	110/75	70
TM.AS01.RDS.000125110	125/110	30
TM.AS01.RDS.000160110	160/110	20
TM.AS01.RDS.000160125	160/110	20
TM.AS01.RDS.000200110	200/110	5
TM.AS01.RDS.000200160	200/160	5



PVC Clean Out

Product Code	Dimension	QUANTITY
TM.AS01.TMG.000000050	50 mm	75
TM.AS01.TMG.000000075	75 mm	50
TM.AS01.TMG.000000110	110 mm	15
TM.AS01.TMG.000000125	125 mm	15
TM.AS01.TMG.000000160	160 mm	8



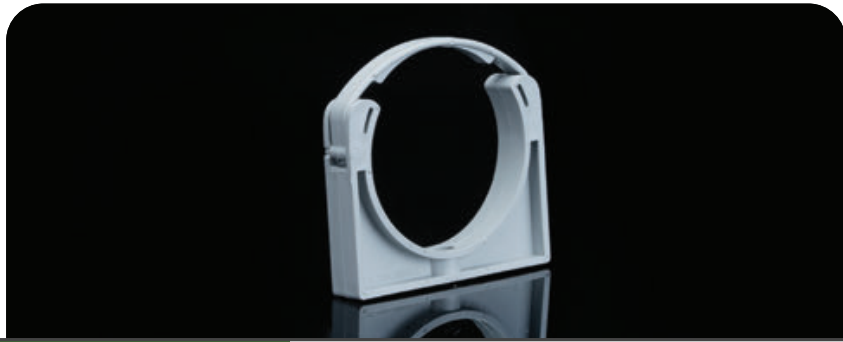
PVC End Cap

Product Code	Dimension	QUANTITY
TM.AS01.KPB.000000050	50 mm	500
TM.AS01.KPB.000000075	75 mm	400
TM.AS01.KPB.000000110	110 mm	150
TM.AS01.KPB.000000125	125 mm	100
TM.AS01.KPB.000000160	160 mm	80



EVA EXCENTRIC WC CONNECTOR

Product Code	Dimension	QUANTITY
TEK000000110	110	18



PVC Clamp

Product Code	Dimension	QUANTITY
TM.AS01.AKL.000000050	50 mm	500
TM.AS01.AKL.000000075	75 mm	200
TM.AS01.AKL.000000110	110 mm	100
TM.AS01.AKL.000000125	125 mm	100
TM.AS01.AKL.000000160	160 mm	50

NOTE

A series of horizontal dashed lines for writing a note.

GREENFIT
Pipe and fittings

PP Mute System

PP Mute System Waste Water Pipes are generally produced in light grey color, also can be produced in different colors upon request.

Production Standards of PP Mute System Waste Water Pipes and Fittings are in strict conformity with TSE (Turkish Standards Institution) TS-275-1 EN 1329-1, Also they are under warranty of GREENFIT PLASTIK who is Certified by ISO 9001-2015 .

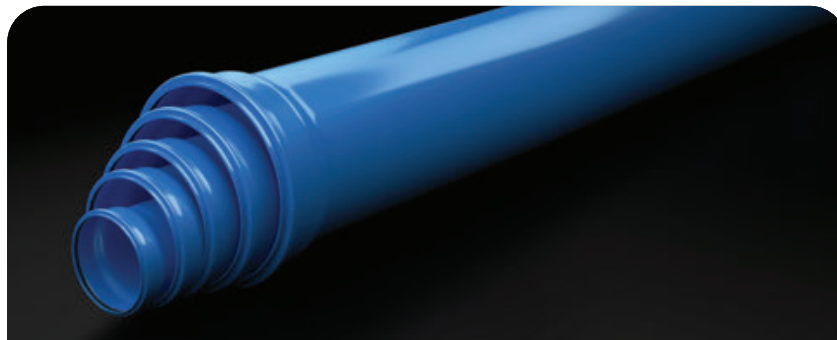






Pipe Silent

CODE	SIZE	S	D	QUANTITY
GF.BR01.PPB.000050150	50/150			
GF.BR01.PPB.000050250	50/250			
GF.BR01.PPB.000050500	50/500			
GF.BR01.PPB.000501000	50/1000			
GF.BR01.PPB.000502000	50/2000			
GF.BR01.PPB.000503000	50/3000			
GF.BR01.PPB.000506000	50/6000			



Pipe Silent

CODE	SIZE	S	D	QUANTITY
GF.BR01.PPB.000075150	75/150			
GF.BR01.PPB.000075250	75/250			
GF.BR01.PPB.000075500	75/500			
GF.BR01.PPB.000751000	75/1000			
GF.BR01.PPB.000752000	75/2000			
GF.BR01.PPB.000753000	75/3000			
GF.BR01.PPB.000756000	75/6000			



Pipe Silent

CODE	SIZE	S	D	QUANTITY
GF.BR01.PPB.0000110150	110/150			
GF.BR01.PPB.0000110250	110/250			
GF.BR01.PPB.0000110500	110/500			
GF.BR01.PPB.0001101000	110/1000			
GF.BR01.PPB.0001102000	110/2000			
GF.BR01.PPB.0001103000	110/3000			
GF.BR01.PPB.0001106000	110/6000			



Pipe Silent

CODE	SIZE	S	D	QUANTITY
GF.BR01.PPB.0000160150	160/150			
GF.BR01.PPB.0000160250	160/250			
GF.BR01.PPB.0000160500	160/500			
GF.BR01.PPB.0001601000	160/1000			
GF.BR01.PPB.0001602000	160/2000			
GF.BR01.PPB.0001603000	160/3000			
GF.BR01.PPB.0001606000	160/6000			



PP Elbow 45

Product Code	Dimension	QUANTITY
GF.PP01.DSK.000050045	50/45	250
GF.PP01.DSK.000075045	75/45	100
TM.AS01.DSK.000110045	110/45	40
TM.AS01.DSK.000125045	125/45	25
TM.AS01.DSK.000160045	160/45	15
TM.AS01.DSK.000200045	200/45	0



PP Elbow 87

Product Code	Dimension	QUANTITY
TM.AS01.DSK.000050087	50/87	200
TM.AS01.DSK.000075087	75/87	90
TM.AS01.DSK.000110087	110/ 87	30
TM.AS01.DSK.000125087	125/ 87	20
TM.AS01.DSK.000160087	160/ 87	10
TM.AS01. DSK.000200087	200/87	0



PP TE Branch 45

Product Code	Dimension	QUANTITY
TM.AS01.TCT.050050045	50/50/45	125
TM.AS01.TCT.075050045	75/50/45	50
TM.AS01.TCT.075075045	75/75/45	45
TM.AS01.TCT.110050045	110/50/45	30
TM.AS01.TCT.110075045	110/75/45	15
TM.AS01.TCT.110110045	110/110/45	15
TM.AS01.TCT.125110045	125/110/45	5
TM.AS01.TCT.125125045	125/125/45	5
TM.AS01.TCT.160110045	160/110/45	9
TM.AS01.TCT.160125045	160/125/45	5
TM.AS01.TCT.160160045	160/160/45	5



PP TE Branch 87

Product Code	Dimension	QUANTITY
TM.AS01.TCT.050050045	50/50/45	125
TM.AS01.TCT.075050045	75/50/45	50
TM.AS01.TCT.075075045	75/75/45	45
TM.AS01.TCT.110050045	110/50/45	30
TM.AS01.TCT.110075045	110/75/45	15
TM.AS01.TCT.110110045	110/110/45	15
TM.AS01.TCT.125110045	125/110/45	5
TM.AS01.TCT.125125045	125/125/45	5
TM.AS01.TCT.160110045	160/110/45	9
TM.AS01.TCT.160125045	160/125/45	5
TM.AS01.TCT.160160045	160/160/45	5



PP Double Branch 45

Product Code	Dimension	QUANTITY
TM.AS01.CCT.505050045	50/50/45	70
TM.AS01.CCT.755050045	75/50/45	50
TM.AS01.CCT.757575045	75/75/45	30
TM.AS01.CCT.115050045	110/50/45	20
TM.AS01.CCT.117575045	110/75/45	15
TM.AS01.CCT.111111045	110/110/45	10
TM.AS01.CCT.121111045	125/110/45	5
TM.AS01.CCT.121212045	125/125/45	5
TM.AS01.CCT.161111045	160/110/45	5
TM.AS01.CCT.161212045	160/125/45	5
TM.AS01.CCT.161616045	160/160/45	4



PP Double Branch 87

Product Code	Dimension	QUANTITY
TM.AS01.CCT.505050087	50/50/87	70
TM.AS01.CCT.755050087	75/50/ 87	50
TM.AS01.CCT.757575087	75/75/ 87	30
TM.AS01.CCT.115050087	110/50/ 87	20
TM.AS01.CCT.117575087	110/75/ 87	20
TM.AS01.CCT.111111087	110/110/ 87	10
TM.AS01.CCT.121111087	125/110/ 87	5
TM.AS01.CCT.121212087	125/125/ 87	5
TM.AS01.CCT.161111087	160/110/ 87	5
TM.AS01.CCT.161212087	160/125/ 87	5
TM.AS01.CCT.161616087	160/160/ 87	5



PP Siphon 'S' 45 / PVC Siphon 'S' 87



Product Code	Dimension	QUANTITY
TM.AS01.SSF.075075045	75/75/45	30
TM.AS01.SSF.075075087	110/110/45	30
TM.AS01.SSF.110110045	75/75/87	10
TM.AS01.SSF.110110087	110/110/87	10



PVC Light Siphon 'S' 45 / PP Light Siphon 'S' 87



Product Code	Dimension	QUANTITY
GF.AS01.LSS.110110045	110/110/45	10
GF.AS01.LSS.110110087	110/110/87	10



PP Sliding Socket



Product Code	Dimension	QUANTITY
TM.AS01.KMN.500000000	50 mm	200
TM.AS01.KMN.750000000	75 mm	100
TM.AS01.KMN.110000000	110 mm	40
TKM00000125	125 mm	30
TM.AS01.KMN.160000000	160 mm	15
TM.AS01.KMN.200000000	200 mm	8
TM.AS01.KMN.250000000	250 mm	0



PP Reduction

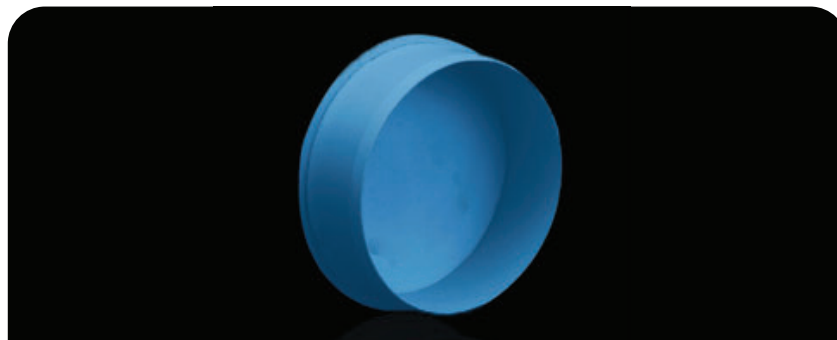


Product Code	Dimension	QUANTITY
TM.AS01.RDS.000075050	75/50	150
TM.AS01.RDS.000110050	110/50	70
TM.AS01.RDS.000110075	110/75	70
TM.AS01.RDS.000125110	125/110	30
TM.AS01.RDS.000160110	160/110	20
TM.AS01.RDS.000160125	160/110	20
TM.AS01.RDS.000200110	200/110	5
TM.AS01.RDS.000200160	200/160	5



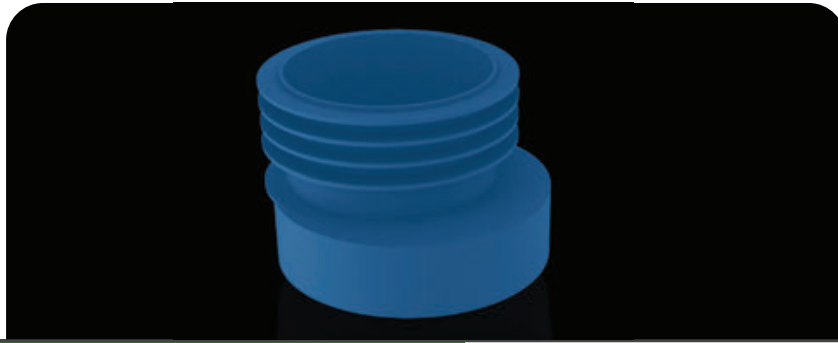
PVC Clean Out

Product Code	Dimension	QUANTITY
TM.AS01.TMG.000000050	50 mm	75
TM.AS01.TMG.000000075	75 mm	50
TM.AS01.TMG.000000110	110 mm	15
TM.AS01.TMG.000000125	125 mm	15
TM.AS01.TMG.000000160	160 mm	8



PP End Cap

Product Code	Dimension	QUANTITY
TM.AS01.KPB.000000050	50 mm	500
TM.AS01.KPB.000000075	75 mm	400
TM.AS01.KPB.000000110	110 mm	150
TM.AS01.KPB.000000125	125 mm	100
TM.AS01.KPB.000000160	160 mm	80



EVA EXCENTRIC WC CONNECTOR

Product Code	Dimension	QUANTITY
TEK000000110	110	18



PP Clamp

Product Code	Dimension	QUANTITY
TM.AS01.AKL.000000050	50 mm	500
TM.AS01.AKL.000000075	75 mm	200
TM.AS01.AKL.000000110	110 mm	100
TM.AS01.AKL.000000125	125 mm	100
TM.AS01.AKL.000000160	160 mm	50





GREENFIT

Pipe and fittings



www.greenfit.com.tr

GREENFIT PLASTİK METAL YAPI ELEMANLARI

ÜRETİM SANAYİ VE TİCARET LTD.ŞTİ.

Tel : +90 282 746 14 11 Fax : +90 282 746 14 12